

SECTION A-A  
BOTTOM BEARING/BASE PLATE  
SCALE 1:2.5

#### GENERAL NOTES:

TURNLOCK-100ECP = 1 DIRECTION ELECTRICALLY CONTROLLED.  
TURNLOCK-100ECP2 = 2 DIRECTIONS ELECTRICALLY CONTROLLED.  
TURNLOCK-100CP = MECHANICAL UNIT.

ZINC PLATED STEEL CONSTRUCTION.  
POWDER-COATED TO DESIRED COLOR. BLACK HAMMERTONE  
IS STANDARD.

MINIMUM PAD SIZE SHOWN. MUST BE LEVEL WITHIN 1/4".

BRACE BARRIER POST AT TOP TO ADJACENT SURFACE.

ALLOW 1" [25.4MM] FOR REMOVAL OF 2 PC COVER.

#### ELECTRICAL NOTES:

POWER SERVICE OPTIONS:

1. 24 VDC
2. 110 VAC SINGLE PHASE
3. 220 VAC SINGLE PHASE 50/60HZ
4. 220 VAC DUAL PHASE 50/60HZ

15A MAINS SERVICE REQ'D

4 LOCATIONS AVAILABLE FOR CONDUIT ACCESS.

AUTHORIZATION, FIRE ALARM REQUIRES DRY CONTACT FROM ACCESS CONTROL.

#### CODED NOTES:

1. BARRIER ASSEMBLY, WELDED - POWDER-COATED STEEL
2. SHIELD ASSEMBLY, WELDED - POWDER-COATED STEEL
3. ROTOR ASSEMBLY, WELDED (3) - POWDER-COATED STEEL
4. CEILING PLATE - POWDER-COATED STEEL
5. MECHANISM CHANNEL - POWDER-COATED ALUMINUM (N.S.C)
6. 2 PC CHANNEL COVER - POWDER-COATED STAINLESS STEEL
7. BASE PLATE - POWDER-COATED ALUMINUM
8. BOTTOM BEARING
9. BOTTOM FLANGE
10. ANCHOR BOLTS (9), PROVIDED

TURNLOCK-100ECP SIZE ( DIMENSIONS IN INCHES)						
NOMINAL SIZE	A	B	C	D	E	K
60	60.13	52.15	60.00	66.00	25.50	23.67
66	66.13	57.09	66.00	72.00	28.50	26.36
72	72.18	63.73	72.00	78.00	31.50	28.34
88	88.28	77.68	96.00	96.00	39.50	35.28

\* NOTE: TOP CHANNEL WIDTH IS 18.21 @ 72,88 NOMINAL SIZE

TURNLOCK-100ECP: FULL HEIGHT SECURITY TURNSTILE

Project: 3/10/2020

Job #:

Rev: C

Rev Date:

By: AA

Architect:

Customer:

Contractor:

Scale:

1 of 2

NTS

Page:

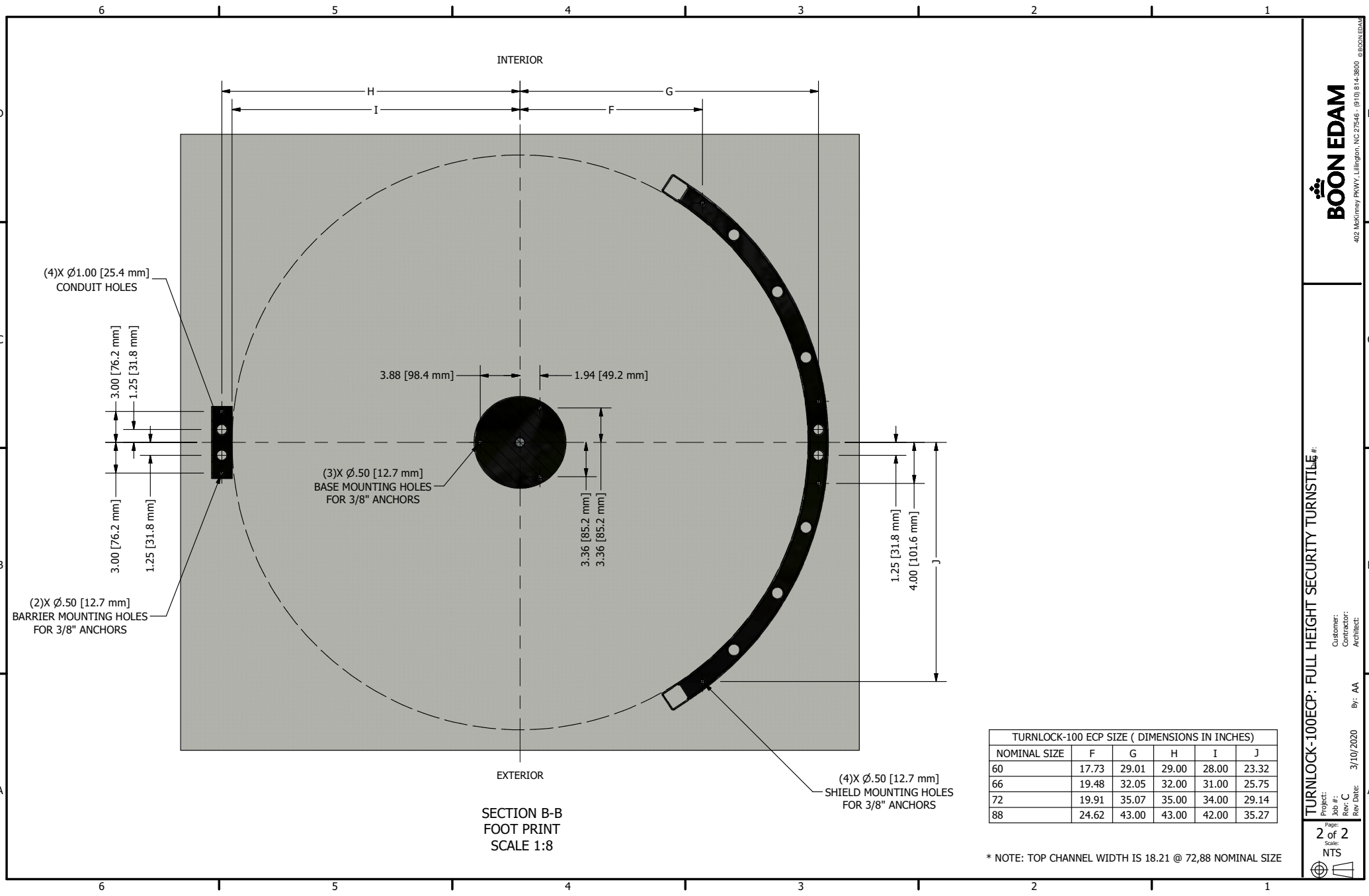
1 of 2

NTS

402 McKinney PKWY, Lillington, NC 27546 - (910) 814-3800

© BOON EDAM

BOON EDAM



TURNLOCK-100 ECP SIZE ( DIMENSIONS IN INCHES )					
NOMINAL SIZE	F	G	H	I	J
60	17.73	29.01	29.00	28.00	23.32
66	19.48	32.05	32.00	31.00	25.75
72	19.91	35.07	35.00	34.00	29.14
88	24.62	43.00	43.00	42.00	35.27

\* NOTE: TOP CHANNEL WIDTH IS 18.21 @ 72,88 NOMINAL SIZE